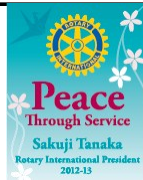




### President Graeme

Appeasing the women in the club—gave his “Rotary Talk” about *Women in Rotary*.  
A most interesting history. Well done Pres!



Rotary's early emblem was a simple wagon wheel (in motion with dust). It was designed in 1905 by Montague M. Bear, a member of the Rotary Club of Chicago who was an engraver. He designed the emblem to represent both civilization and movement. Most of the early Rotary clubs adopted the wheel in one form or another.

The present emblem, 24 cogs and six spokes, was adopted in 1924. A keyway was added to signify usefulness. An official description of the emblem was adopted at the 1929 International Convention.

# Rotary Club of Fern Tree Gully Inc.

Volume 50 No. 11

10th September, 2012

INCORPORATED REG. No. A0023463V  
DISTRICT 9810 VICTORIA AUSTRALIA

CHARTERED: 16<sup>th</sup> May, 1963

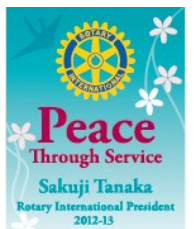
Postal Address: P. O. Box 164 FERNTREE GULLY, VIC 3156  
Website: [www.ferntreegullyrotary.org.au](http://www.ferntreegullyrotary.org.au)

## WEEKLY BULLETIN

ROTARY CLUB OF FERN TREE GULLY  
50TH ANNIVERSARY  
2013

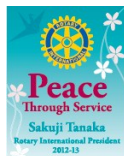
President, Rotary International - **SAKUJI TANAKA & Kyoko,**  
**Rotary Club of Yashio, Saitama, Japan**  
District Governor, Dist. 9810 – **BRIAN MARTIN & Sue,**  
**Rotary Club of Box Hill Central**

President, Rotary Club of Fern Tree Gully – **GRAEME ASPINALL**  
Benefactor, Rotary Club of Fern Tree Gully – **IVAN GIGOVIC, Vale: August 2003**





# THE ROTARY CLUB OF FERN TREE GULLY INC., 2012-2013



## The Board

<b>PRESIDENT</b>	-	<b>Graeme Aspinall</b>
<b>PRESIDENT ELECT</b>	-	<b>Mike Spark</b>
<b>SECRETARY</b>	-	<b>John Flemming</b>
<b>TREASURER</b>	-	<b>Enid Hughes</b>
<b>PAST PRESIDENT</b>	-	<b>Enid Hughes</b>
<b>COMMUNITY</b>	-	<b>Julie Goodchild</b>
<b>VOCATIONAL</b>	-	<b>Phil Walters</b>
<b>INTERNATIONAL</b>	-	<b>Paul McAloney</b>
<b>NEW GENERATIONS</b>	-	<b>Greg Downes</b>

## Office Bearers

<b>FOUNDATION</b>	-	<b>Robert Dawson</b>
<b>MEMBERSHIP &amp; MARKETING</b>		<b>Graeme Aspinall</b>
<b>FELLOWSHIP</b>	-	<b>Fran Mandergheddes</b>
<b>PROGRAM</b>	-	<b>Mike Spark</b>
<b>BULLETIN EDITOR</b>	-	<b>Enid Hughes</b>
<b>Aus. Rotary Health</b>	-	<b>Graham Faulkner</b>

## THE FOUR-WAY TEST

Of the things we think, say or do :-

- Is it the **TRUTH**?
- Is it **FAIR** to all concerned?
- Will it build **GOODWILL** and **BETTER FRIENDSHIPS**?
- Will it be **BENEFICIAL** to all concerned?



## PAST PRESIDENTS :

1963-64	<b>HALL</b> Frank	1989-90	<b>FREGON</b> John
1964-65	<b>THOMSON</b> Ken	1990-91	<b>VIZE</b> Stuart
1965-66	<b>CLARKE</b> * Harold	1991-92	<b>ADAMS</b> Brian
1966-67	<b>MARTIN</b> Laurie	1992-93	<b>WYLIE</b> * Peter
1967-68	<b>ELDRIDGE</b> Jeff	1993-94	<b>ASPINALL</b> Graeme
1968-69	<b>RUSSELL</b> Harry	1994-95	<b>MOORE</b> Robert
1969-70	<b>CHAPPILL</b> Geoff	1995-96	<b>WILLINGHAM</b> Ed
1970-71	<b>COOK</b> Duncan	1996-97	<b>EDMUNDS</b> Hilton
1971-72	<b>CASTRICUM</b> * John and <b>MILLER</b> Ken	1997-98	<b>SPARK</b> Mike
1972-73	<b>LANGFORD</b> * Greg	1998-99	<b>FLEMMING</b> John
1973-74	<b>de JONGE</b> Lawrence	1999-2000	<b>OGLE</b> Tony
1974-75	<b>CRANE</b> * Reeve	2000-01	<b>YEATS</b> Sandy
1975-76	<b>BROWN</b> John	2001-02	<b>HALL</b> Marilyn (First Woman President).
1976-77	<b>FOSTER</b> Ken	2002-03	<b>McALONEY</b> Paul
1977-78	<b>CALLAHAN</b> * Jack	2003-04	<b>DAWSON</b> Rob
1978-79	<b>MILLER</b> Ken	2004-05	<b>MANDERGEDDES</b> Fran
1979-80	<b>RICHARDS</b> John	2005-06	<b>WALTERS</b> Phil
1980-81	<b>BEASLEY</b> * Royce	2006-07	<b>GOODCHILD</b> Julie
1981-82	<b>SHORTER</b> Barry	2007-08	<b>ASPINALL</b> Graeme
1982-83	<b>BOSCOTT</b> Bob	2008-09	<b>FAULKNER</b> Graham
1983-84	<b>BARUDAY</b> George and <b>DASBOROUGH</b> Don	2009-10	<b>LINCOLN</b> Merv.
1984-85	<b>MITCHELL</b> * Ron	2010-11	<b>LINCOLN</b> Merv
1985-86	<b>HURST</b> Robert	2011-12	<b>HUGHES</b> Enid
1986-87	<b>GLADWIN</b> Bill	* Have "Passed on to meet Paul HARRIS".	
1987-88	<b>ELLIOTT</b> John		
1988-89	<b>GUINEY</b> * David		

# Community Kitchen Roster - 2012

Guide Hall  
Underwood Rd  
Ferntree Gully (Next to train station car park)  
Rotary roster - every second Wednesday, 5.30pm

DATE	ROTARIAN
19 <sup>th</sup> September	Graeme Aspinall
3 <sup>rd</sup> October	Virginia Rutledge
17 <sup>th</sup> October	John Flemming
31st October	Virginia Rutledge
14th November	Greg Downes
28th November	John Flemming
12th December	Enid Hughes

Dinner provided  
Contact Julie Goodchild for more information: 0418 567 318



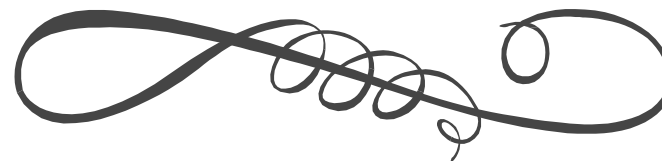
## CLUB NOTICES

Please Note: The Rotary Club of Fern Tree Gully will hold its Annual General Meeting on the night of Monday, 8th October, 2012



## UPCOMING MEETING RESPONSIBILITIES

Date & Time:	Monday 10th Sept [6:30 for 7:00] Knox Tavern	Monday 17th Sept [6:30 for 7:00] Knox Tavern	Monday 24th Sept [6:30 for 7:00] Knox Tavern	Monday 1st Oct [6:30 for 7:00] Knox Tavern
Venue:	Knox Tavern	Knox Tavern	Knox Tavern	Knox Tavern
Program:	Wills - Will you or won't you?	Our Community Bank	District Governor's Visit	Committee Meeting
Speaker:	Andrea Olsen	Janine Shepherd	Brian Martin	Geoff Limmer - District Conf.
Committee Subject	N/A	N/A	N/A	TBA
Chairman:	Fran M	Rob D	Bob H	TBA
Cashiers:	Virginia R & Paul W	Paul W & Graham F	Fred M & Fran M	Phil W & Paul W
Grace & Toast:	Enid H	Angela L	Phil W	Rahul M
Rotary Knowledge	TBA	Virginia R (About Me)	TBA	TBA
Sergeant-At-Arms:	Phil W	Phil W	Julie G	Julie G
Scribe:	Rob D	Greg D	Enid H	Bob H



<b><i>Birthdays:</i></b>	10th—John Flemming 12th—Graeme Emonson
<b><i>Wedding Anniversaries:</i></b>	13th—Lindy & Graham Faulkner—'75 15th—Marjorie & Rob Dawson
<b><i>Induction to R.C. of F.T.G</i></b>	None

## MINUTES OF MEETING: MONDAY, 3rd Sept, 2012

The meeting opened at 7.04 pm with President Graeme welcoming all members and our Assistant Governor, Tony Monley. Tony introduced himself, giving a short outline of his background.

President Graeme announced:

- Two breathometers have been installed—one at the Cuckoo Restaurant and one at the Wantirna Club. In July Wantirna had 39 users and the Cuckoo 35. (73% were under .05). No income has yet been received by the club. Two more Breathometers to be yet placed. The main target is still the ALH group.

**Chairman:** Graeme Aspinall

### CHAIRMAN'S REPORTS

**Secretary:** John Flemming

- Read and distributed the mail:
  - Invoice for badges
  - Letter re Christmas Cakes
  - Cheryl Wylie—accepting Honorary Membership
  - Request to participate in Hat Day
  - Eastern Ranges school—help with project
  - Request to do a BBQ on Australia Day
  - Letter from Mike Spark seeking 6 months leave of absence and resigning from his position as President Elect.

**Apologies:** Angela Locke, Greg Downes, Fred Mason, Stuart Vize, Mike Spark

**Make-ups:** None

**Treasurer:** Enid Hughes

No report

**Vocational:** Phil Walters

No report

**Community:** Julie Goodchild

No Report

**New Generations:** Greg Downes

Absent—No report



## LUCINDA NOLAN

Rotary is a strong and truly valued partner of Victoria Police and provides significant support to us as an organisation, especially in the area of funding and providing professional development opportunities to enhance our members' community engagement skills.

Rotary District 9800 is a major partner in the Victoria Police Leadership Mentoring Programme which also includes members of the business community. It began as a pilot program in 2007 with 15 senior police, 15 Rotarians and 15 business mentors. Mentoring is an important leadership development strategy for assisting our Police Leaders' transition to Senior Management.

The Victoria Police Leadership Mentoring Programme refers to 'a supportive relationship characterised by constructive role-modeling, encouragement of aspirations and the positive reinforcement to achieve goals'.

Under this unique annual partnership up to 20 Police Managers are assigned two mentors each - one mentor being an experienced Rotarian, sharing experiences in living out the Rotary 4-way test; and the other an experienced business executive from the private, public or not-for-profit sectors.

Amongst other outcomes it helps increase their appreciation for, and to have a broader understanding of, the Rotary environment. Plus they get to explore opportunities with their mentors as to how the ideals of voluntary service can be achieved through fellowship in their personal, occupational and community life

Rotary also supports, in so many ways, our most vulnerable and 'at risk' community members. Again, Rotary provides funding and support to assist local communities and joint initiatives. Often the focus is on health issues affecting disadvantaged children, implementing programs and projects for disadvantaged youth, assisting the homeless and the disabled; along with other valued community service initiatives that improve life in the local community.

Rotary's motto Service Above Self aligns closely with the aims of Victoria Police in Upholding the Right.

We rely heavily on the generosity of Rotary and look forward to a continued and strong working relationship for the benefit of our communities.

Lucinda Nolan - Acting Deputy Commissioner  
Strategy and Organisational Development  
Victoria Police



# WHAT'S ON IN DISTRICT 9810?

## Training Matters—PDG David Forster

The more you know about Rotary and its programs, the more you will be able to contribute to your Club and to Rotary's overall mission.

Training in D9810 is an ongoing process, covering both structured and informal learning. The goal is to ensure that all Rotarians have sufficient knowledge to carry out their current roles and to develop additional knowledge to give them the confidence and capability to move into others at Club and District levels where they may volunteer and or are invited to contribute.

The annual District Assembly and Avenues of Service Seminars provide knowledge on the suites of programs on offer and how they are managed, including Club access and participation. In addition, Presidents Elect are mandated to attend the annual Presidents Elect Training Seminar (PETS) in the year prior to taking up that role. However, it is strongly recommended that members taking on this role attend PETS the previous year along with any pre-PETS activity scheduled by the incoming DG. They should also attend a Rotary Leadership Institute (RLI) series on the basis that a major factor of effective leadership in Rotary is current knowledge. RLI provides a series of facilitated sessions from experienced

Rotarians to provide that knowledge base.

Other options to enhance confidence and leadership skills include the Potential Rotary Leaders Seminars (PRLS) which will be re-instituted in D9810 in 2013. From time to time, other formal programs are conducted. This year, sessions on Social Media and Improving Club Communications are being offered.

Details on all these activities will be posted on the District website.

Beside these formal sessions, there are many online resources on the RI website in the [e-learning centre](#). Like all professionals, Rotarians are responsible for taking some initiative for their own professional development. So please take the time to look though the site and the links to find your own portal into this aspect of Rotary.

The more you understand and the more knowledge you can then share adds to your effectiveness as a Rotarian and in the communities we serve – both locally and internationally.

PDG David Forster is the District Training Chair and is more than happy to visit Clubs to further discuss the range of training options available and how to access and utilise online resources. 📧

## WOMEN IN ROTARY

To mark International Women's Day and to promote Women in Rotary, the week of 4-8 March 2013 will be called *Women in Rotary Week*. During this time each club is encouraged to have a female guest speaker, a female Chairman and invite female guests to promote not only International Women's Day, but also Women in Rotary.



### International: Paul McAloney

Has revised his budget and would be submitting it to the Board.

- Cambodia
- ABC Dreams
- Vehicle—Taveuni—Fiji (RC of Chelsea project)
- Girls Dormitory—Fiji

### Club Service:

No Report

### Fellowship: Fran Mandergeddes

- Permits for the Highway collection for the CFA have not yet been received but have been assured they will. List for volunteers will be circulated after receipt of permit.

### Rotary Knowledge: Graeme Aspinall

Graeme gave a history of "Women in Rotary"

### Sergeant-at-Arms: Phil Walters

Asked everyone what they had been doing during the week—with great gusto!

**Skill:** Phil W drew 4 Hearts

### PROGRAM: COMMITTEE MEETING—Led by President Graeme

Conducted a breakout session on suggestions as to where the Club should be heading with its 3-year strategic plan

The session was centered around how to Benefit the Community and included suggestions such as Donations to the Community, Club publicity re community project; Involvement of Community; the identification of community projects; Recognition of Community Leaders; Mental Health Awareness and Youth Projects.

President Graeme dealt with the housekeeping, and reminded Board Members that a Board Meeting was to follow shortly.

Meeting Closed at 8.30 pm

Scribe Paul Wilson



## PRESIDENT'S REPORT

The Presidents of Rowville-Lysterfield, Knox, Bayswater and myself on behalf of Fern Tree Gully have now signed off on the documents to purchase a suitable vehicle for Knox Community Policing.

A Nissan Tiida will be purchased from Ferntree Gully Nissan. It has taken nearly three years since this project was conceived at a Cluster level and now has come to reality. The vehicle will be presented to Knox Police at a Business Breakfast hosted by RC of Rowville-Lysterfield on October 11<sup>th</sup>.

It would be great if some of our members were able to attend this breakfast. I will have some registration forms at our meeting next Monday.

At our Board meeting last Monday our projects budgets were finally passed. We will be supporting four international Projects with funds from our Benevolent Account. We will publish more details about these projects in coming weeks.

An application for extended leave until February 2013 from Mike Spark was granted. I'm sure we will see Mike back in the new year.

We have been approached with a couple of fund raising opportunities. John Flemming will have more details of these at our next meeting. While on fundraising two of our Breather Machines have been installed for three months now. From an usage report I have received there should be some income due to us. I'm sure Enid will follow this up. On Friday evening we visited the Wantirna Club for dinner. After having a beer and sharing a bottle of red wine I decided to check my alcohol level - only blew .024 safe to drive home (now have a guide on having a drink with a meal).

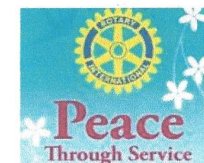
A couple of weeks ago I spoke about the Melbourne marathon to be held on Sunday October 14<sup>th</sup>. The Cerebral Palsy Education Centre (CEPEC) is seeking our Club Members' assistance again as Marshalling Volunteers. Our role would again be presenting medalions at the finish line on the MCG. Tee Shirts, food, drinks and a lot of enjoyment are provided. At this week's meeting I will be seeking names of those who would like to help out.

Looking forward to seeing you all on Monday



**Graeme Aspinall**  
President

At the Board Meeting last Monday, Board Members voted to support the very worthwhile project listed below.



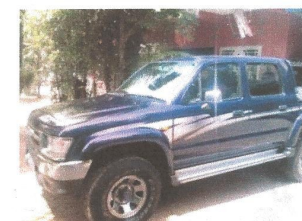
Bula Rotarians!

Following our President's meeting of Friday 10 August, I am writing to remind Club Presidents and International Chairpersons of this worthwhile project to raise \$20,000 for the Rotary Club of Taveuni, Fiji for the purchase of a 3-5 year old Toyota Hilux. This vehicle would be used by Rotary volunteers who visit Taveuni and assist with the endless education projects undertaken by the Rotary Club of Taveuni.

If you were unable to attend the meeting on Friday 10<sup>th</sup>, Peter Brown will be in touch to discuss this great project. We are looking for a donation of \$300 to \$500 from every club towards this international project and we hope to sign off by the end of September. What a great achievement to start the year and every participating club would have completed an international project.

Vinaka

Peter & Helene Brown  
Rotary Club of Chelsea  
0408 366 686



**Rotary Club of Chelsea Inc.**  
Rotary International District 9810  
PO Box 103, Chelsea VIC, 3196  
Incorporation No. A0015255N